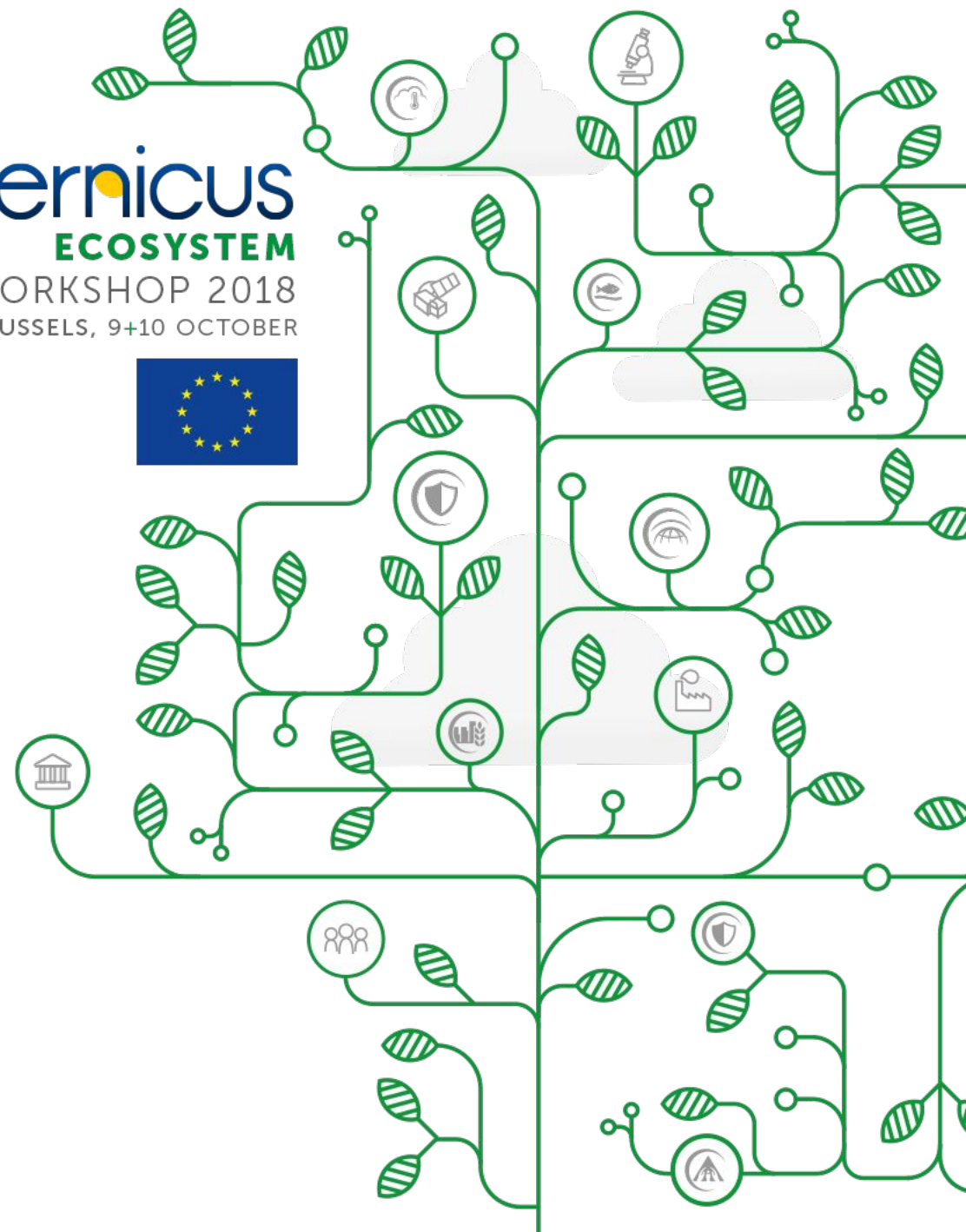


**Angela Corbari**  
Studiomapp Cofounder & COO

**Copernicus**  
**ECOSYSTEM**  
WORKSHOP 2018  
BRUSSELS, 9+10 OCTOBER



# STUDIOMAPP

maps and apps for quality of life



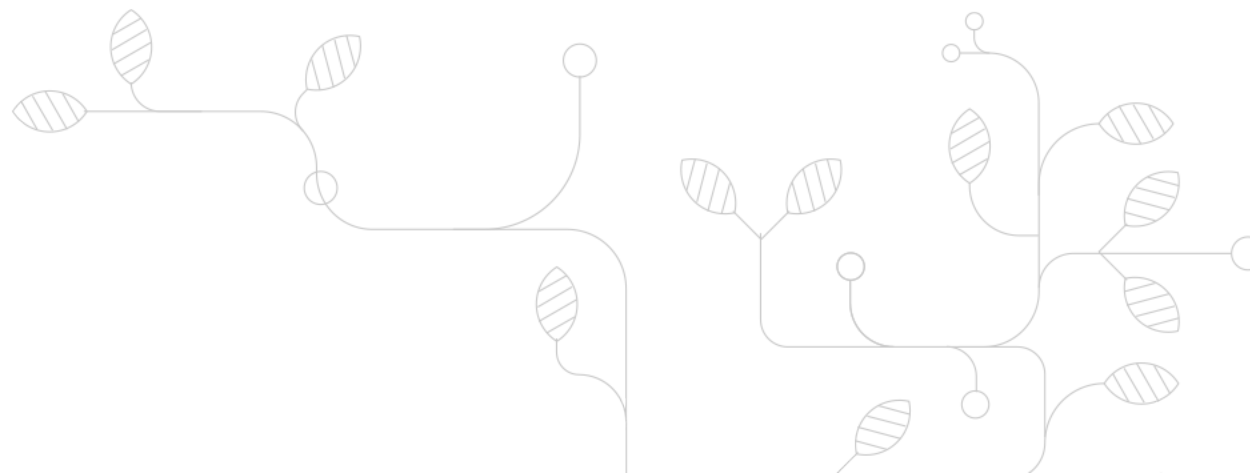
**Leonardo Dal Zovo**  
Software Developer  
Data Scientist  
AI Wizard  
**CTO- FOUNDER**



**Angela Corbari**  
Digital Maps & Remote sensing  
**COO- FOUNDER**



**Simonetta Perazzolo**  
Math Professor  
**CEO- FOUNDER**



# STUDIOMAPP

maps and apps for quality of life

Is supported by:



Comune  
di Ravenna



Università Commerciale  
Luigi Bocconi





maps and apps for quality of life



# STUDIOMAPP

maps and apps for quality of life

## **BOOSTING ECONOMY AND IMPROVING QUALITY OF LIFE THROUGH TECHNOLOGY AND GEOSPATIAL INTELLIGENCE**



 Copernicus  
ECOSYSTEM  
WORKSHOP 2018  
BRUSSELS, 9+10 OCTOBER



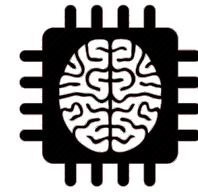
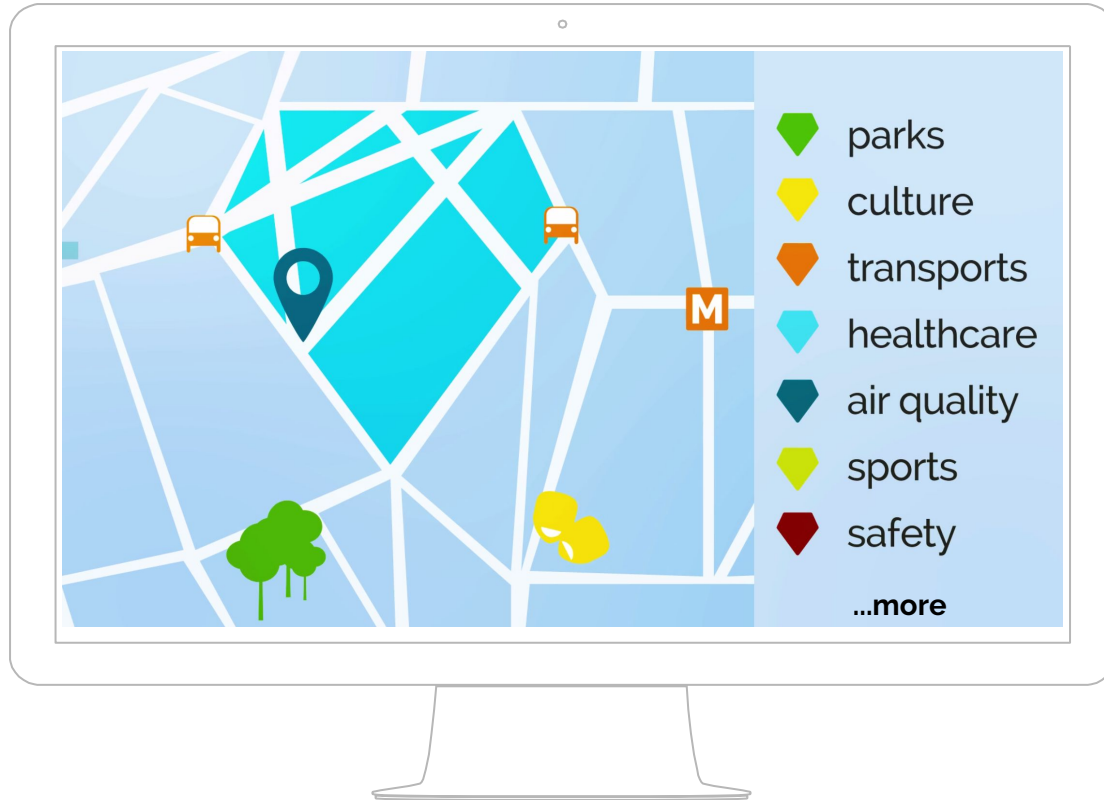
# Qirate

## A location intelligence service that rates quality of life at street level

The name derives from **the arabic name** قيراط, **qirat**, the **carat**, the unit of measure of weight of precious stones and metals.

The logo represents a diamond with streets and neighbourhoods.





Algorithm collects data from **different sources** and uses **AI** for analysis and classification



Neighbourhood assessed using **Scientific ratings** used in Ecology

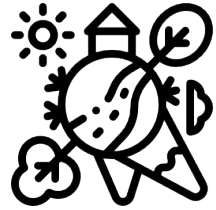


**All info gathered in 10+categories and showed** on map with details (type, distance, walking distance, area, ect.,)



# CHALLENGES WITH DATA

8



ENVIRONMENTAL  
INFORMATION AT GLOBAL  
SCALE



UPDATED



OFFICIAL



STARTUP-FRIENDLY LICENCE

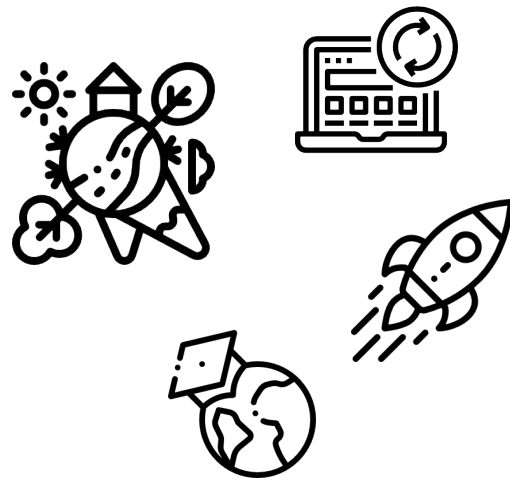






full, free and open data policy

**KEY ENABLER**



COMPETITIVE ADVANTAGE





ROME, ITALY

# Urban Green Spaces Detection

(Public and Private)



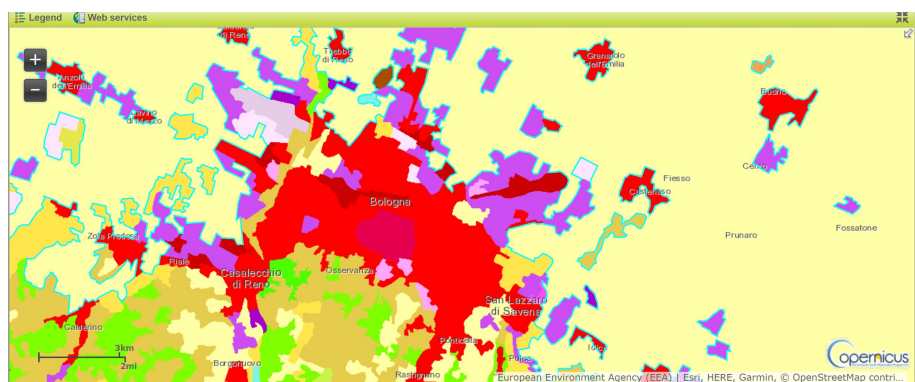
BOLOGNA AND  
PARMA, ITALY

# Corine Land cover and Population estimation for scaling in EU

## OBJECTIVES

Create a software platform, available on line / off line, that controls and forecasts the potential impact of heavy rains.

READ MORE



Take part in the project



**LIFE15/CCA/IT/000035**  
With the contribution  
of the LIFE financial  
instrument of the  
European Community

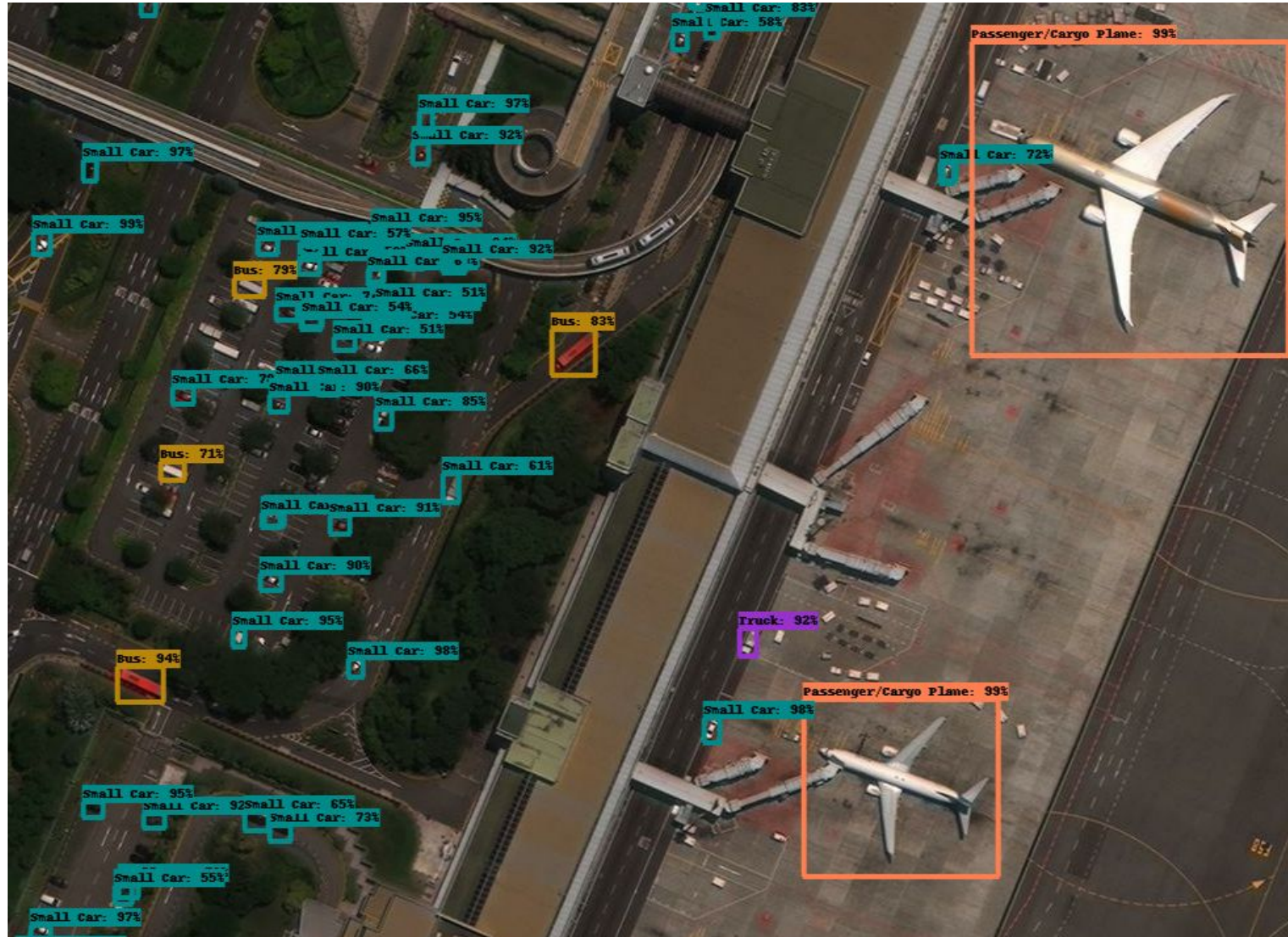


IMOLA,  
ITALY

## Risk assessment for leaking roofs and geo marketing







## New data challenges

# STUDIOMAPP

maps and apps for quality of life

**[www.studiomapp.com](http://www.studiomapp.com)**

**[angela@studiomapp.com](mailto:angela@studiomapp.com)**



**Copernicus**  
**ECOSYSTEM**  
WORKSHOP 2018  
BRUSSELS, 9+10 OCTOBER