

Geo"spatial"-intelligence

2

 **NATIONAL GEOSPATIAL-INTELLIGENCE AGENCY**

WHAT IS GEOINT?

UNCLASSIFIED

GEOINT is composed of information layers, which answer such questions as...



- ❖ Where am I?
- ❖ Where are the friendlies?
- ❖ Where are the enemies?
- ❖ When might they move?
- ❖ Where are the non-combatants?
- ❖ Where are the obstacles, natural or man-made, and how do I navigate among them?
- ❖ What is the environment?
- ❖ What does it mean?
- ❖ What is the impact?

6

UNCLASSIFIED

THE UNITED STATES OF AMERICA



Intelligence cycle



The intelligence cycle

(EU) Defence geo-intelligence needs

A Global Strategy for the
European Union's Foreign And Security Policy

“European security and defence must become better equipped to build peace, guarantee security and protect human lives, notably civilians. The EU must be able to respond rapidly, responsibly and decisively to crises, especially to help fight terrorism.”



(EU) Defence geo-intelligence needs

From Shared Vision
to Common Action:
**Implementing the
EU Global Strategy**
Year 1

between EU civilian and military missions. At the same time, the EU has reinforced its civil-military situational awareness through the joint work carried out by EU Intelligence and Situation Centre and the Intelligence Directorate of the EUMS within the EEAS.



The case of SatCen



The SatCen

7

Who we are

A unique operational GEOINT instrument to support the EU External Action
Agency of the EU Council
HQ in Torrejón de Ardoz, Spain
GEOINT Service Provider, 24/7 availability
EO Satellite Data – secure context



Our Mission

Analysis for decision making and actions in the field of CFSP/CSDP, including EU missions and operations by providing products and services resulting from the exploitation of relevant space assets and collateral data



Our Current Engagements



Operations



Regional Conflicts



Piracy



Migration



Proliferation WMD



Humanitarian Aid



To produce ***timely, relevant, reliable, accurate geospatial intelligence products and services (GEOINT)*** resulting from the exploitation of relevant space assets and collateral data, including satellite and aerial imagery.



Products & Services Overview



Example of geo-intelligence for Defence needs



11

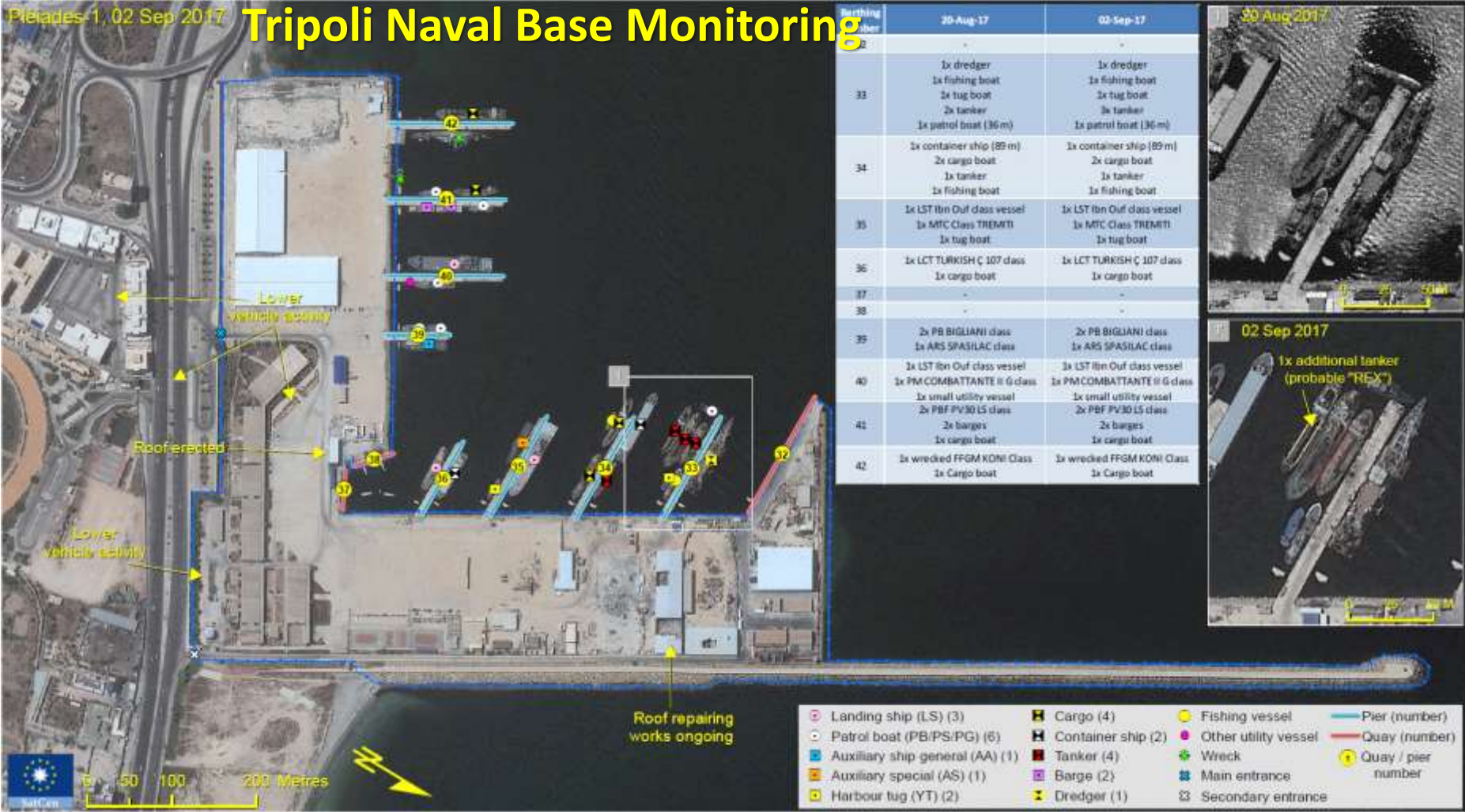


(The EU Mission is not allowed to enter the two breakaway regions).



BRUSSELS, 9+10 OCTOBER

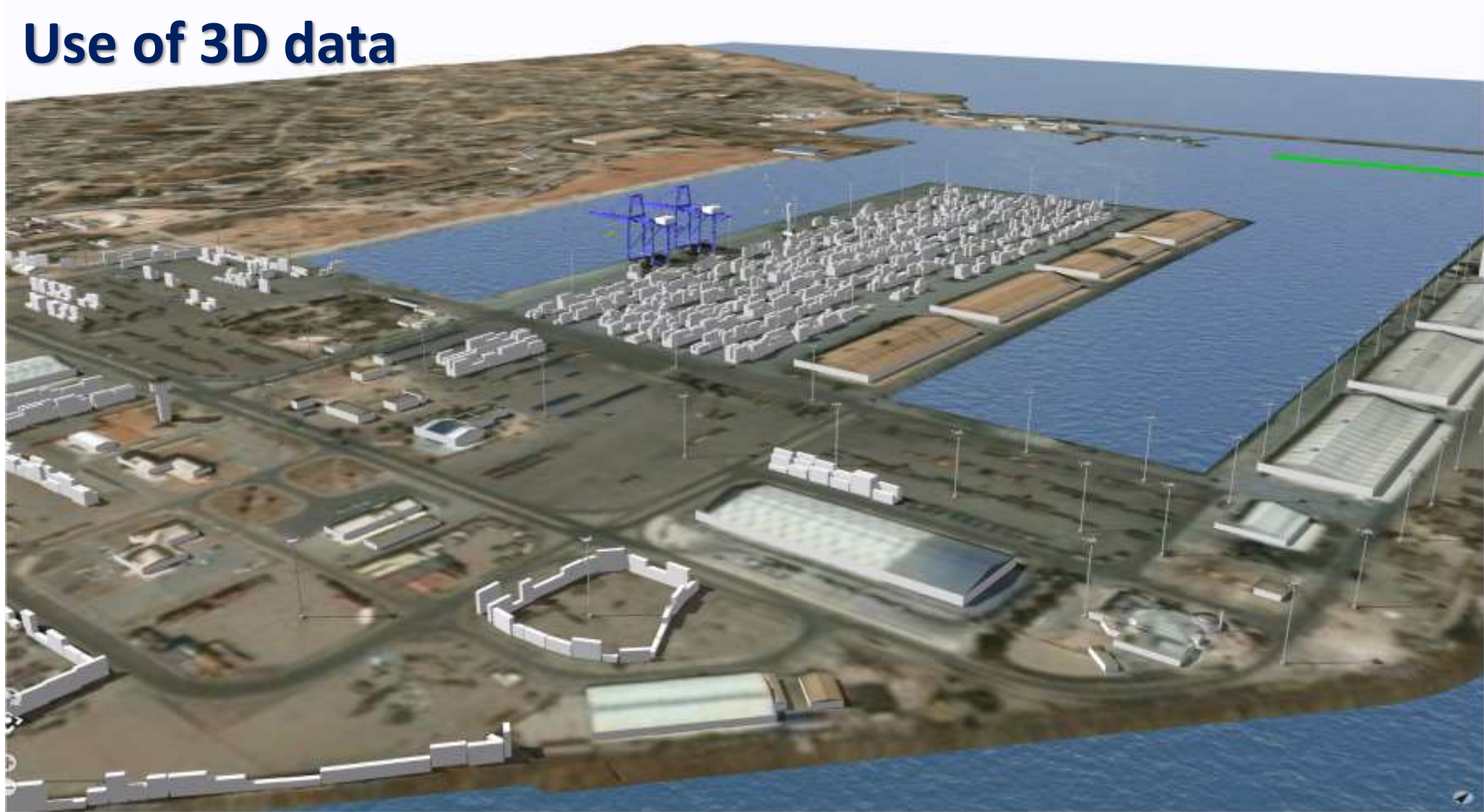
Support to EU NAVFOR MED SOPHIA



Support to EU NAVFOR MED SOPHIA

13

Use of 3D data



Misratah Port 3D scene – SatCen product *(City Engine – Esri)*



Support to OSCE SMM Ukraine

14

Monitoring Military Activity



Contact Zone Analysis

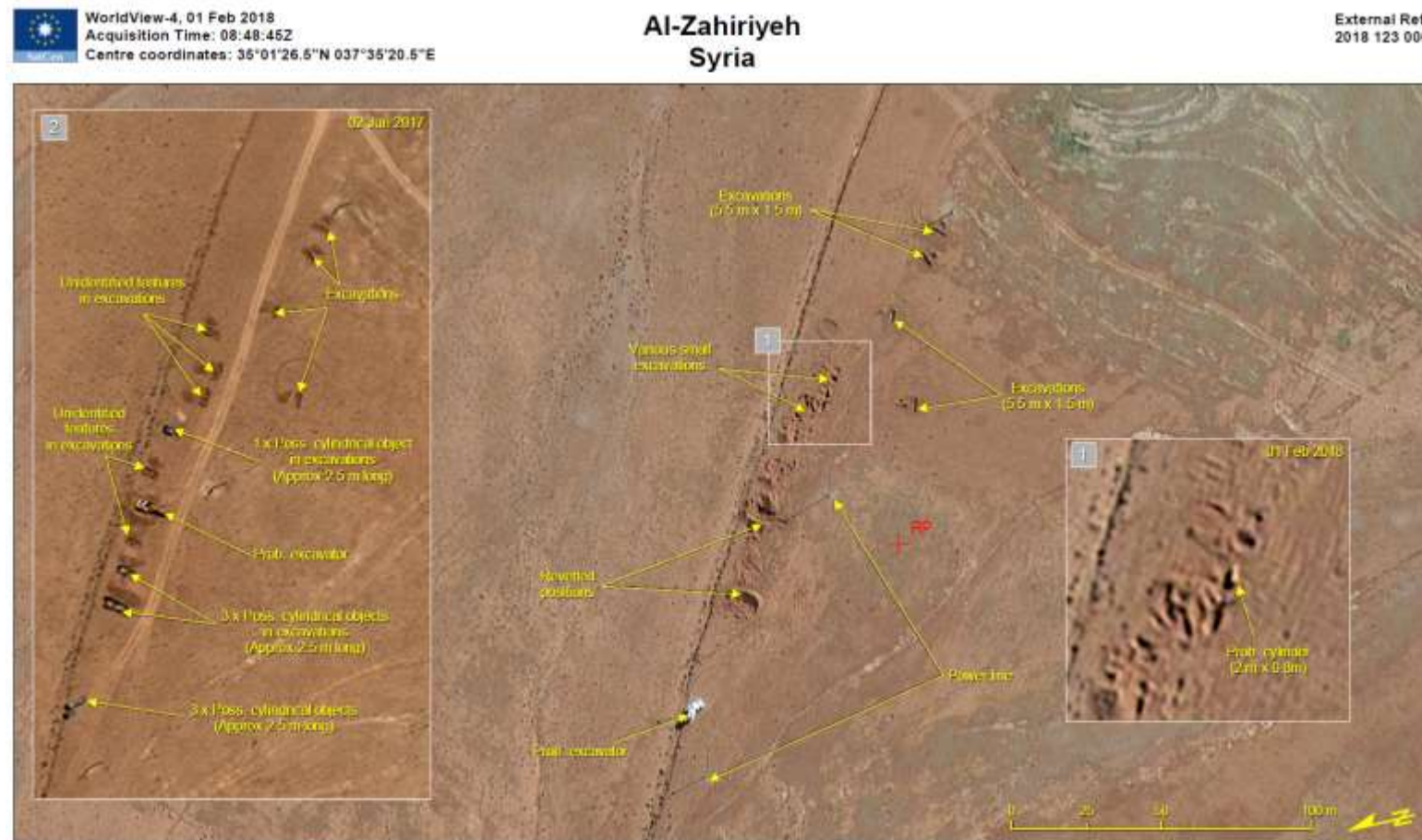


Damage Assessment/Shelling



Support to OPCW

15



On 01 Feb 2018, numerous excavations of various sizes were observed in the vicinity of the tasked coordinates (35°01'26.5"N 037°35'20.5"E). In addition, a single probable cylinder (2 m x 0.8 m) was observed next to excavations (Inset 1). Further west, a probable excavator was observed. No additional significant features were detected.

Note that significant activity was observed at this location on 02 Jun 2017 (Inset 2), including the presence of at least 7 possible cylindrical objects, most of them located within excavations, and a probable excavator.

IA Comment: Although the exact nature of the possible cylindrical objects observed on 02 Jun 2017 cannot be assessed, it appears that most of this material has been removed or concealed since then. The recent excavations observed on 01 Feb 2018 and the presence of a probable cylinder nearby tend to confirm that some materials have been recently unearthed at this location.



Multi-Source Data Fusion

16



The map composition above focuses on a large concentration of military equipment. At the time of imagery acquisition, a convoy of vehicles was waiting to move to a temporary parking area where a large number of HETs were noted.

IA comment: The convoy was comprised of armoured vehicles, HETs (loaded with engineering and armoured vehicles) and civilian trucks.

Open source video footage of a convoy in Syria, reportedly recorded on 31 Jan 2018, showed a very similar convoy en route to Idlib. Indeed, at least seven vehicles noted in Reyhanli could be identified on the video footage (the snapshots above are taken from the video footage). The other vehicles in the footage (HETs carrying ACV-15 and engineer vehicles, BMC KIRPI and OTOKAR COBRA, **Inset 1**) are consistent with the vehicles detected nearby on the satellite imagery. This suggests that Reyhanli is used as a staging area by Turkish Forces before they enter into Syria.



Syria - Aleppo – Damage Assessment

17



Ballistic Missiles

18

WorldView-2, 28 Jan 2018
Acquisition Time: 06:24:06Z
Centre coordinates: 25°20'48"N 066°39'20"E

Kathor-Winder Missile Test complex Pakistan

External Ref:
2018 004 003



DPRK - Pongdon-Ni Rocket Launch Facility

19



Future trends



New paradigm in space

21

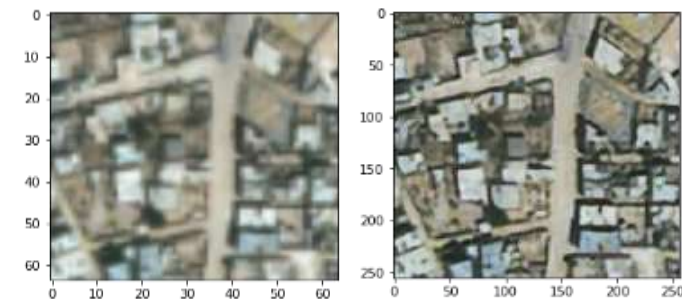
- New constellations and sensors (small, micro and nano satellites);
- New analysis technologies (automatic detection algorithms using Artificial Intelligence);
- Business model of commercial providers based on subscription services (access to data+analytics);
- Big Data analysis (need of performant processing platforms);
- Wide area analysis (detection of anomalies);
- Integrated services with other INT (SIGINT, HUMINT, OSINT...);
- Real-time and near real-time products and services...



Artificial Intelligence in SatCen

22

- **Computer vision:** detection of objects from Satellite Imagery, from internet imagery, face detection and identification, extraction of roads, buildings, change detection, land use extraction
- **Natural language processing:** identification of topics from social media, clustering of data, assisted editing of analysis,
- **Cybersecurity:** anomaly detection on web portals usage, clustering of servers
- **Social media** extraction and analysis
- **Predictive models** on ships movement, refugee etc.



Copernicus support to geo“spatial”-intelligence needs



Copernicus SEA - Operations

24

Thematic Areas requested:

- Critical Infrastructure Analysis
- Non EU-Border Map
- Reference Map
- Camp Analysis
- Activity Report
- Road Network Status Assessment
- Support to Evacuation Plan

UNCLASSIFIED



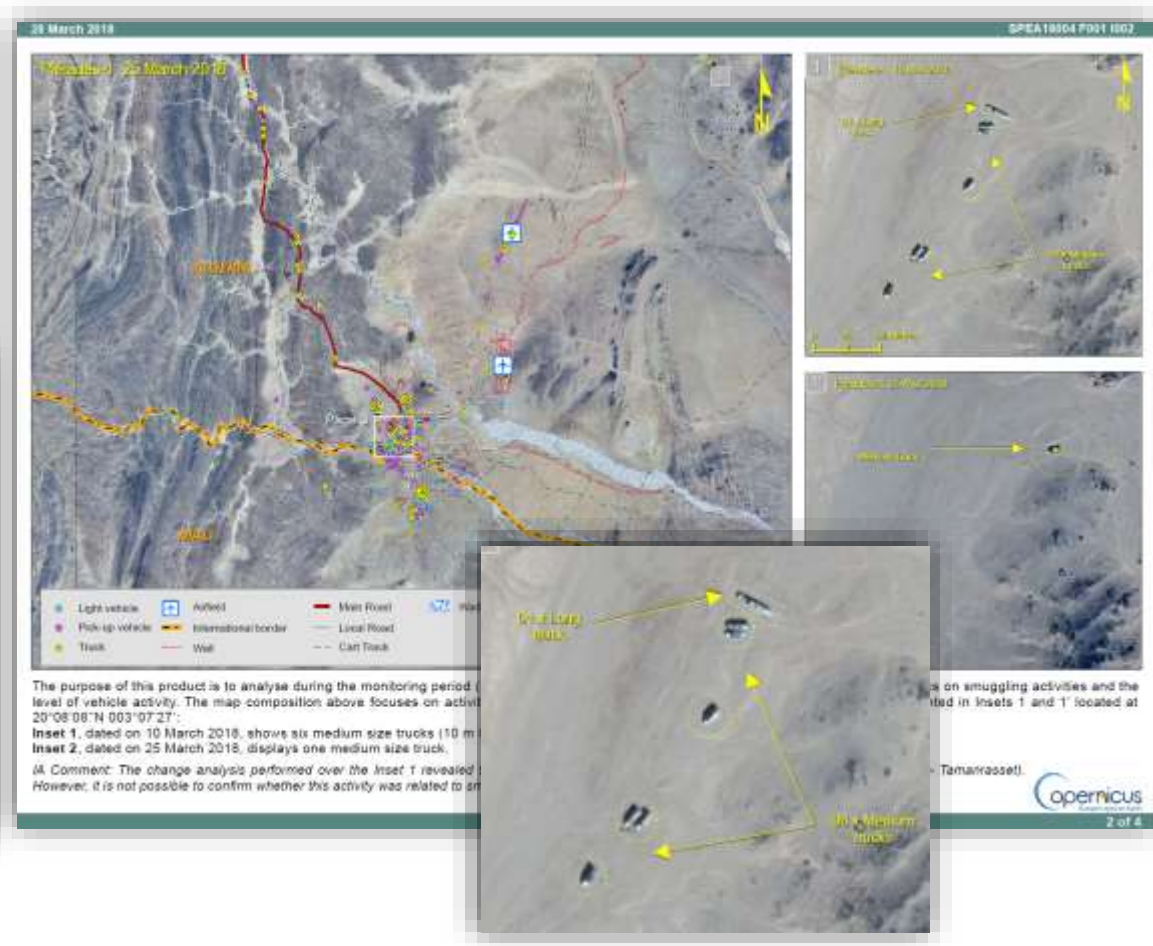
Critical Infrastructure Analysis

25



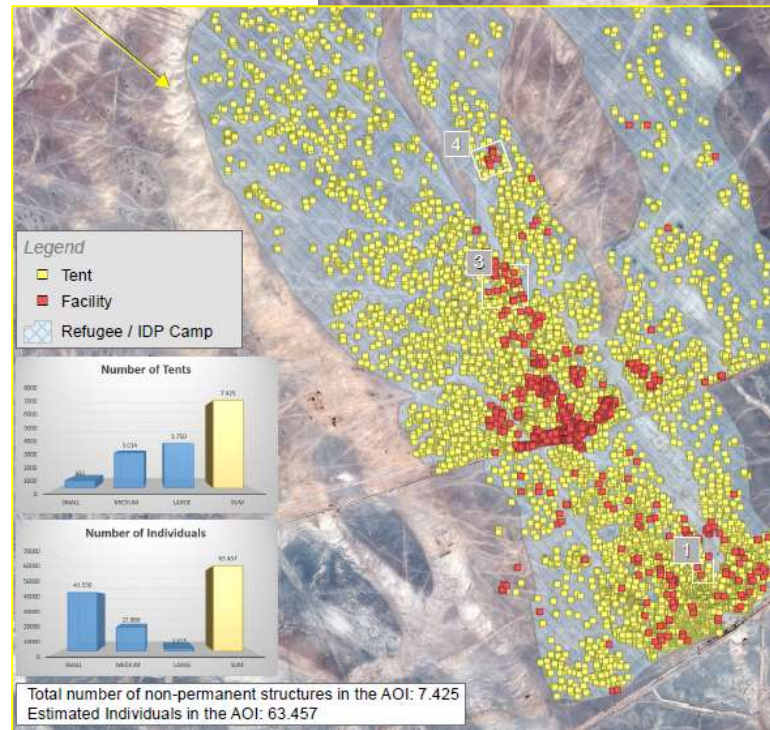
Route Analysis

26



Refugee Camps Monitoring

Activity Report – Camp analysis



Geo-intelligence for Defence

- Consider to fulfil a wider range of **Defence/CSDP needs** (consider compliance with EUCI - European Union Classified Information - ?)
- Upgrade the **Copernicus Infrastructure** (use of DIAS, networks, data security, etc.)
- Increase the use of **Artificial Intelligence** (Machine learning, Deep learning, etc) for large area data processing and analysis before analysis
- Consider the **access to new sensors** (including non-space RPAS, HAPS, etc)
- **Synergies with other EU Space Programmes** (Galileo, GovSatCom, etc)



Conclusions

- SatCen is delivering geo-intelligence for Defence needs (and for Security needs)
- Geo-intelligence for Defence and Geo-Intelligence for Security are using same capabilities with some differences regarding the sensitivity and the nature of the objects or situations observed
- Copernicus has the capacity to deliver substantial capacity in geo-spatial intelligence for Defence providing some upgrade of the infrastructure, protection of sensitive “classified” data and Service portfolio.
- Subject to be explored more in detail tomorrow in the parallel session 2 “Safety and Security”



Engaged for Excellence

**Thank you for your
attention!**



EUROPEAN UNION
SATELLITE CENTRE

Analysis for decision making

The Copernicus Ecosystem logo, featuring a stylized blue 'C' and the text "Copernicus ECOSYSTEM".
WORKSHOP 2018
BRUSSELS, 9+10 OCTOBER