

Machi Symeonidou

DRAXIS SA

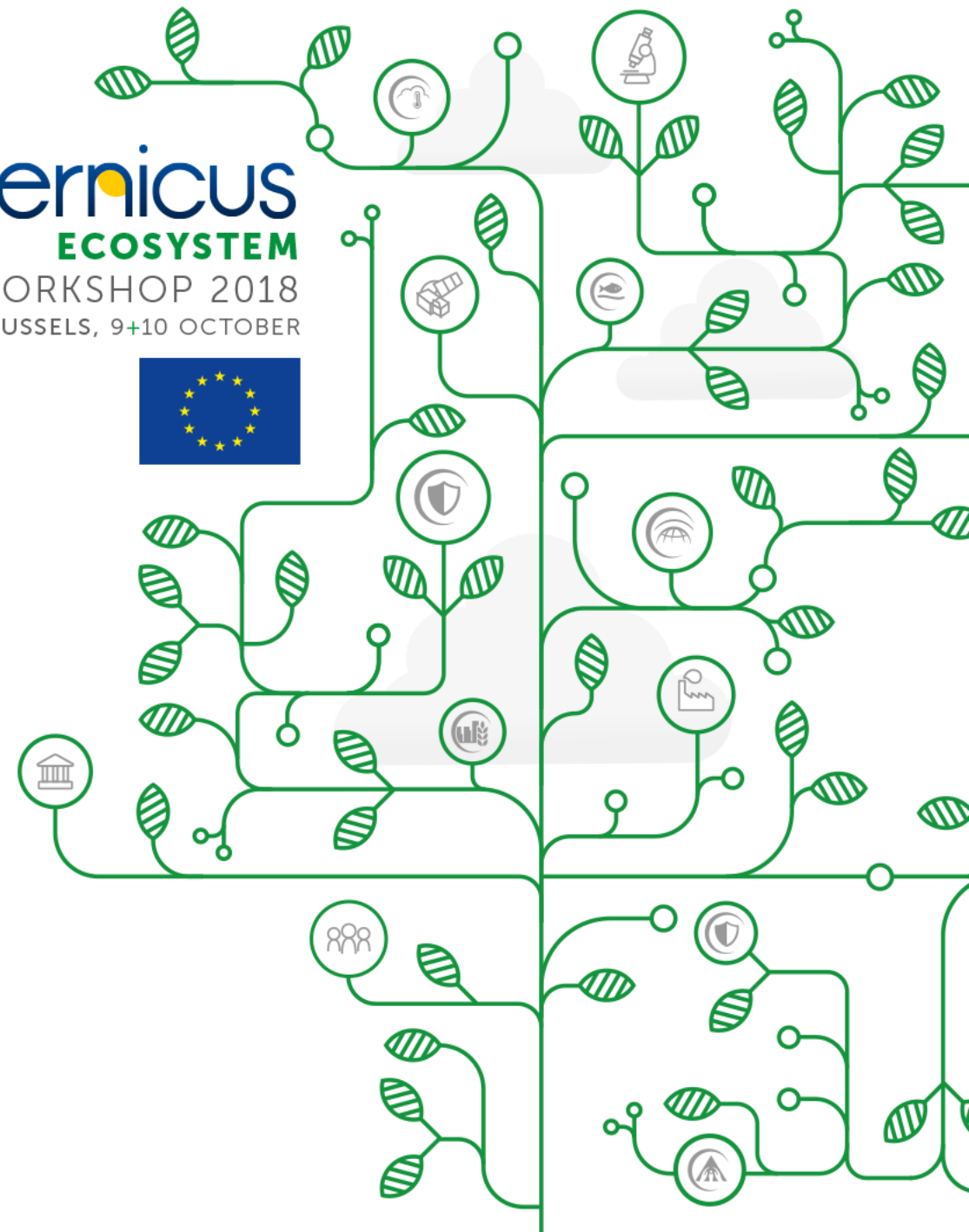


Can we transform Copernicus and user generated data in to added value service for CAP monitoring?

Insights from the RECAP h2020 project

Dr. Simeonidou Machi

 **Copernicus**
ECOSYSTEM
WORKSHOP 2018
BRUSSELS, 9+10 OCTOBER



Challenges in CAP monitoring

3

1

Large number of rules

2

Complex measures due to the level of detail of the applicable rules

3

Control procedures are reflected in **high costs**

4

Checking for all rules across the entire farm can be **time-consuming**

5

Shift from a **control** to a **monitoring approach**

6

Use of **new technology** and **multiple data sources**

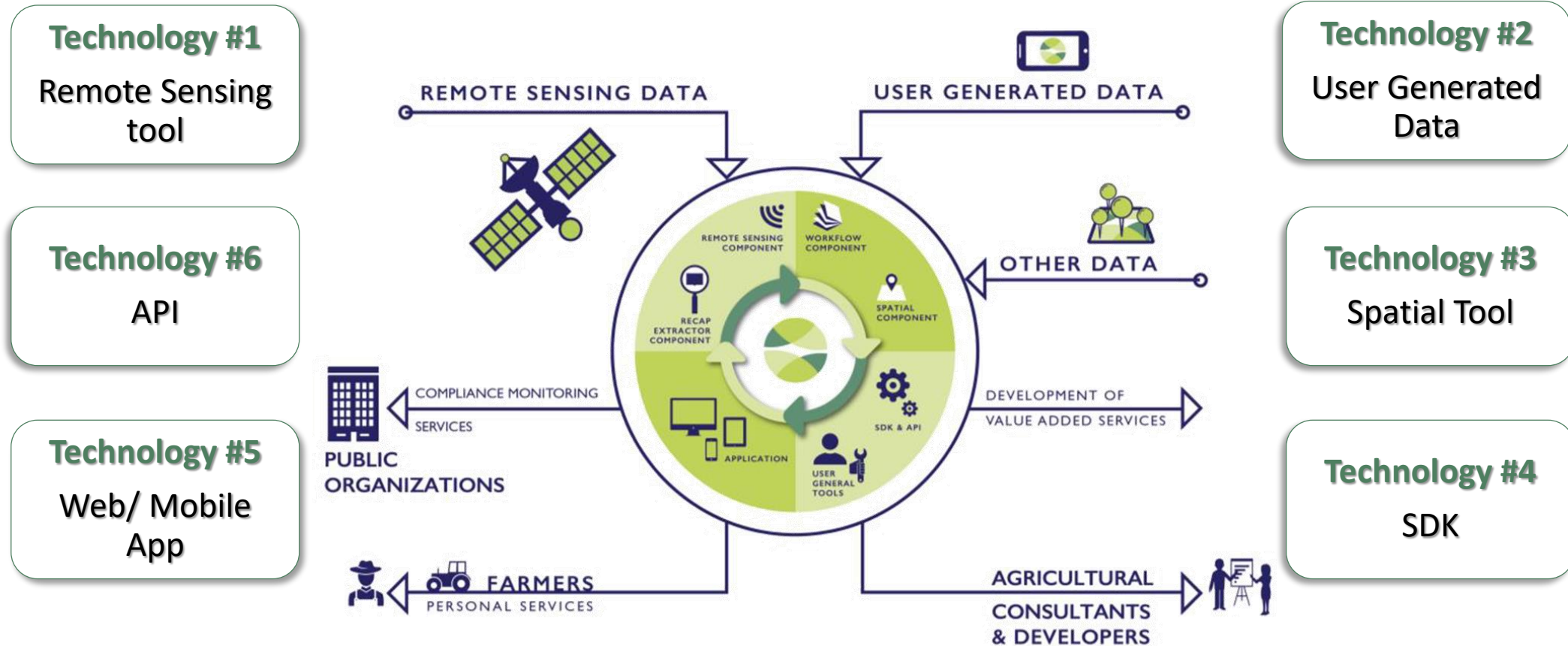


RECAP as a solution

- We can combine and make best use of **open satellite data** and **knowledge** available within the whole agricultural ecosystem.
- We can **break down** this very complex legislation into practical everyday **personalized guidance for farmers.**
- Public authorities' procedures can be more **transparent** and more **efficient.**

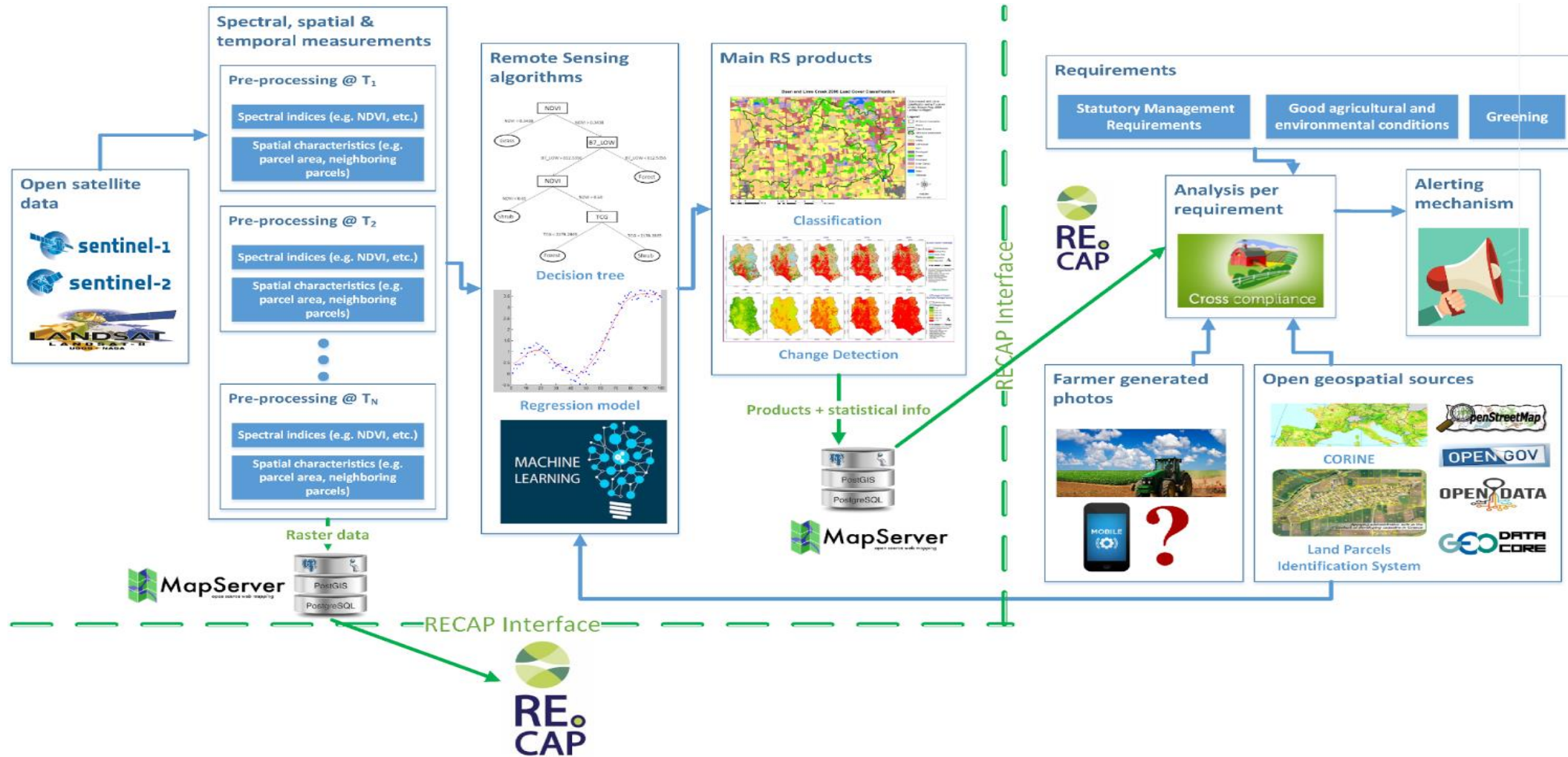


RECAP – an integrated & open approach



RECAP Remote Sensing Component

6

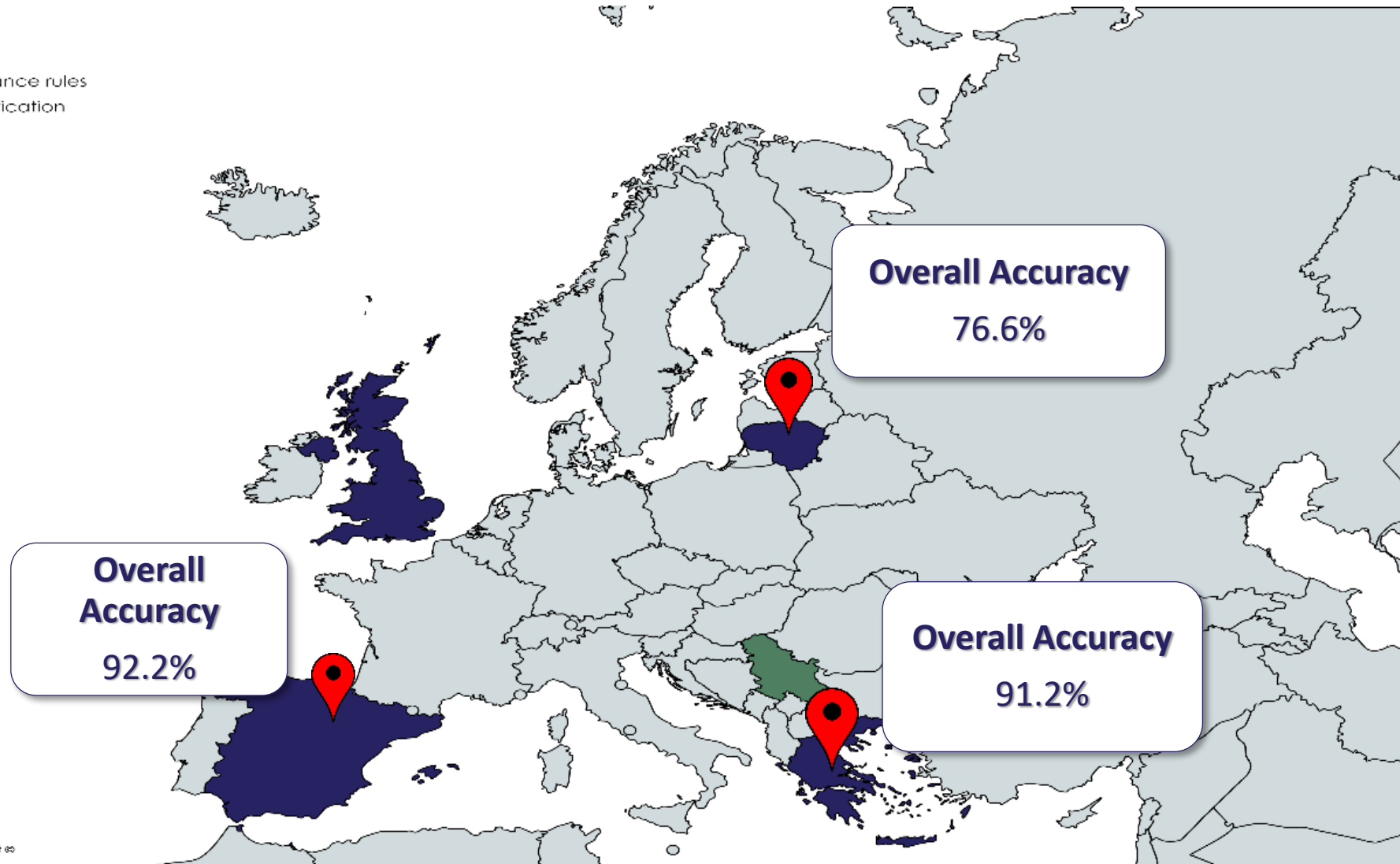


Remote Sensing Results - Crop Classification

7

Pilot countries

- Cross Compliance rules
- Organic Certification



Created with mapchart.net



CAP Rules Algorithmically Addressed

8

Greening 1 & 2:

- Crop Diversification, Permanent Grassland

GAEC 1,4,5 & 6:

- Buffer Strips, Minimum Soil Erosion, Minimising Soil Erosion, Maintaining the level of organic matter in soil

SMR 1:

- Reducing water pollution in VNZs



What have we achieved?

9



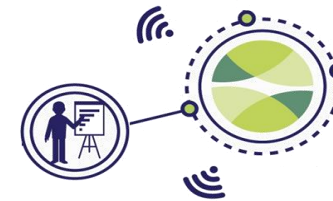
Paying Agencies

More **targeted** on-field inspections
Better **control system** based on **satellite images & registry information**
Reduction of **costly & time-consuming** procedures



Farmers

Personalised guidance
Active participation
Access to **up-to-date** information
Reduction of **administrative burdens**
Closer relationship for farmers & inspectors
More **transparent** execution controls



Agr. Consultants & Advisors

Improved advisory services
Supporting **Farmers' compliance**
Data **availability, accessibility & re-use**
Development of services under **an open approach**



What have we learnt?

10



Farmers – Focus on producing

Holistic approach within the
policy framework

Build/enhance digital skills

More open data

Lack of LPIS open data

Need for interoperable data

Integrated EU & national systems

Centralized interconnected systems for
public authorities

Enhanced public e-services



Thank you!

Machi Simeonidou
General Manager
msimeonidou@draxis.gr
<http://draxis.gr/>

